

## **Historic, archived document**

Do not assume content reflects current scientific knowledge, policies, or practices.



62.83

217205

INDEXED

★ APR 14 1935  
U. S. Department of Agriculture

# CATALOG AND PRICE LIST



*Established 1882*

**Locke Nursery & Floral Company**

**New Braunfels, Texas**



## TO OUR CUSTOMERS

Please do us the honor to accept this catalog as a cordial invitation to come in and spend a few moments. You will find our stock superior and well fitted to successfully fill your needs. By looking over the catalog it may suggest many items that will make your home and home grounds more beautiful and your orchard more fruitful by planting the best that is to be had, both in selection of varieties as well as quality of stock.

We depend upon the high quality of our goods to hold our customers and bring us new ones. So we feel assured we can please you. Our prices are reasonable—very low, in fact, quality considered.

### SHIPPING INSTRUCTIONS

Customers will please state whether they wish their order sent by Parcel Post, Express or Freight. The size limit of Post Parcels is 84 inches in combined girth and length. For this reason no tree over 4 feet high can be sent by Parcel Post and must be sent by Express. Express is the most satisfactory for shipping trees from 10 pounds to 300 pounds and not more costly than freight, and much quicker. We pay no transportation charges.

We ship our orders just as soon as possible after receiving them, and do most of the work ourselves and take great pride in packing in the best possible manner in order that our customers get their trees and plants in good condition.

### OUR LOCATION

Our large establishment is located half a mile west of the City of New Braunfels, next to the famous Landa Park and the Comal Power Plant, and is easily accessible. We have the best of transportation facilities, being on two of the largest and most direct trunk lines, M.-K.-T. and I.-G. N. railways.

**We solicit correspondence in English, German, or Spanish.**

*An unsere deutschsprachigen Kunden:*

Alle Kunden, die Deutsch schreiben, können ihre Anfragen und Aufträge in deutscher Sprache einsenden. Wir werden alle Aufträge prompt und gewissenhaft ausführen und garantieren Zufriedenheit.

**A Nuestros Apreciables Clientes Mexicanos:**

Tenemos el gusto de presentarles este nuevo catalogo, esperando que les sea util en seleccionar sus plantas.

Al hacer sus pedidos, hagannos el favor de escribir su nombre y direccion con toda claridad, para evitar errores.

Pueden escribirnos en castellano, y les aseguramos que sus pedidos seran despachados con todo esmero y puntualidad.

Siempre estamos dispuestos a ayudarles en la seleccion de arboles, plantas, etc.

**LOCKE NURSERY & FLORAL CO.**  
**NEW BRAUNFELS, TEXAS**

**Largest Exporter of Nursery Stock into Mexico**

**FLORAL DEPARTMENT**

**MEMBERS OF THE F. T. D.**

Through our affiliation with the  
F. T. D. we can telegraph your  
order of flowers for delivery any-  
where in the United States

We specialize in Funeral Wreaths  
Sprays and other designs  
appropriate for any  
occasion

*“We Grow Our Own Flowers”*

## Our Policies, Service and Business Information

1. **Always give full address** every time you write.

2. **Terms.** Our terms are Cash with Order. The prices are Net Cash.

3. **Remittances** should be made payable to Locke Nursery and Floral Company and the best way to send them is by Bank Draft, Express Money Order, or Postoffice Money Order.

4. **Shipping Instructions.** Customers will please state whether they wish their orders to be sent by Parcel Post, Express or Freight. Transportation at purchaser's risk and expense.

5. **Parcel Post charges have to be prepaid,** and for this reason money will have to be sent to cover cost of postal charges.

6. **Express.** For all shipments up to 300 pounds the Express is the most satisfactory, and not any more costly than freight. Even in heavy shipments Express may cost more but the quicker service pays.

7. **Freight.** For very large and heavy shipments, and where quick delivery is not an element. All our shipments are so packed that they will carry several weeks by freight without injury to the stock.

8. **Express and Freight Shipments** can be sent "Charges Collect," and such charges are no more than if "Prepaid." For this reason no money has to be sent to cover Express or Freight charges.

### 9. **Our Guarantee:**

We guarantee to send:

- (a) Healthy stock.
- (b) Free from insects, diseases, etc.
- (c) Delivered in Good Condition.

Then our responsibility ceases. If we fail in these, we will:

- (a) Replace with other stock of same value, or
- (b) Refund the purchase price of stock in question. But it is mutually un-

derstood that we will not be liable for any greater amount or damages. If stock is not accepted on these terms, we should be notified at once, not over five days after receipt, and we will refund the money remitted and advise disposition of stock in question.

---

### DISTANCES FOR PLANTING

Depending on character of soil, etc.

Peach, Plum, Apple, Apricot, 20 to 25 feet apart each way.

Pear, 20 to 30 feet apart each way.

Pecans, 40 to 60 feet each way.

Haupt, McDonald and Dallas Berries, 3½ by 5 feet. In rich land 4 by 6 feet.

Other Blackberry and Dewberry, 3 by 4 feet.

Strawberry, 1 by 2½ feet.

Grapes, 12 by 18 feet.

---

### NUMBER OF TREES OR PLANTS TO THE ACRE

1	x	1	ft. 43,560	16 x 16 ft.	170
1	x	2½	ft. 17,424	18 x 18 ft.	130
2	x	2	ft. 10,890	20 x 20 ft.	108
1½	x	3	ft. 9,680	20 x 25 ft.	87
3	x	4	ft. 3,630	25 x 25 ft.	69
3½	x	5	ft. 2,430	30 x 30 ft.	48
4	x	4	ft. 2,722	30 x 60 ft.	24
5	x	6	ft. 1,815	25 x 30 ft.	58
10	x	10	ft. 435	40 x 40 ft.	27
12	x	12	ft. 302	40 x 50 ft.	22
12	x	18	ft. 201	50 x 50 ft.	17
14	x	14	ft. 223	60 x 60 ft.	12

To determine number of trees to an acre for any given distance apart, multiply distance apart, and divide 43,650 by this product.

For example:

$$18 \times 20 \text{ feet} = 360$$

$$43,560 \div 360 = 121$$

There are 121 trees per acre, planted 18 by 20 feet.

## PLANTING INSTRUCTIONS

Many do not realize the importance of giving trees a little care upon arrival. For this reason we are giving this space in our catalog for your benefit. Failure to get satisfactory results can be largely avoided by observing the few simple but important instructions here given.

### CARE UPON ARRIVAL

On arrival of the trees from the Nursery, if unable to plant immediately, and if the trees are dug without a ball of earth intact (Balled), they should be taken from the bale or box at once, counted and the individual trees examined. Should there be a shortage, it should **BE REPORTED AT ONCE**. Bare-rooted stock should be immediately heeled in a well-drained, moist piece of sandy ground in order that the soil may thoroughly pulverize between the roots, keeping them from air-drying. The soil should be thoroughly packed around the roots. Water freely and frequently until the trees are planted.

### STOCK ARRIVING IN FREEZING WEATHER

If frozen when received, do not open the bales or boxes, but place them in a cellar or some cool, dark room that is free from frost, and let them remain until all frost is drawn out. If no cellar or frost proof room is available, bury the box or bales in sawdust or dirt until thawed. The point is to get the frost entirely out without sudden exposure of stock to heat, light or air. Even if frozen solid, stock will not be injured if handled in this manner.

### TIME OF PLANTING

In this climate vegetation, although inactive in the winter for the formation of leaves and new wood, is never so as to new roots. A tree transplanted in the early winter will, by the ensuing spring, have grown sufficient new roots to give it a firm hold in the ground, and will grow off rapidly when active vegetation commences. Plant as early after the first killing frost as practicable, although hardy stock can be safely transplanted any time during the winter when the ground is not too wet or frozen. Planting can be continued until the middle of

March, or until just before the buds begin to swell.

### PREPARATION OF THE SOIL

The most desirable soil for fruit trees is a rich loam, naturally dry or made so by drainage. Peaches and plums must be planted on high, well-drained soil. Before planting, prepare the land by thoroughly plowing and subsoiling, first using a two-horse plow, followed by a subsoil plow. Lay off the rows at required distances, and dig holes at least two feet wide and two feet deep; fill the holes by breaking in the sides, commencing at the bottom and going upward. Use surface soil in filling up.

### PREPARATION OF TREES AND HOW TO PLANT

Before planting, remove the broken roots; cut back one-year peach, apple, pear, cherry and plum trees to a naked stem  $1\frac{1}{2}$  to  $2\frac{1}{2}$  feet high, leaving no side branches. Two-year old trees should have their branches cut back to half their length or less.

### FERTILIZING

**Do not** use unrotted stable manure or compost fertilizer when trees are planted. All fertilizers must be thoroughly incorporated with the soil. Avoid the contact of the roots with heating manures. A few pounds of bone meal or a few shovels full of **well rotted** stable manure can be used at the bottom of the hole with good results at the time the trees are planted. When filling the hole use soil which came from the bottom of the hole at the surface. Best results with unrotted manure are attained by using it as a **mulch**, after the trees are planted.

### WATERING

Sprinkling or spraying are of little value during times of drought. Remember the roots of most plants are buried 8 to 10 inches in the soil and it takes a good soaking to reach them. Let the hose run slowly for an hour or so, or several hours.

### SELECTION OF TREES

For this climate experience has taught us that one and two year old trees of thrifty growth are the most desirable.



# OUR STOCK OF FRUIT TREES

## Apples

**Prices:** Strong 4 ft. 35c, 2 year 50c each, \$5.00 per doz.

**Delicious**—Large, dark red, crisp, juicy.  
**Jonathan**—Medium size, red and yellow, tender white flesh.

**Mammoth Black Twig**—Large, bright yellow.

**Red Astrahan**—Large, juicy, a good bearer.

**Early Harvest**—Large, pale yellow.

**San Jacinto**—Large red apple.

**Red June**—Medium size, bright red skin.

**Becker**—A summer apple, red.

**Helm**—Large red.

**Arkansas Black**—Dark red.

**Kinnaird's**—Red, large; a superb Southern Winter apple.

## Crab Apples

**Prices:** 4 to 6 ft. 50c.

**Transcendent**—(Siberian.) An attractive yellow color.

**Hyslop**—Medium in size, very bright red skin.

**Whitney**—Large, striped.

## Pears

**Prices:** 2 to 3 ft. 30c, 4 to 5 ft. 40c, 6 to 7 ft. 75c.

In order of ripening.

**Locke's Pride.**

**Summer Beauty**—Large, yellow with a bright red cheek, flavor sweet sugary. Ripening the end of July.

**Le Conte**—Creamy yellow when ripe.

**Bartlett**—Standard and dwarf.

**Garber Hybrid**—Resembles the Kieffer in size, shape and color.

**Kieffer Hybrid**—Very large, skin yellow with a brilliant vermilion cheek.

**Chinese Sand**—Called the "Pineapple Pear."

## Apricots

**Prices:** 2 to 3 ft. 25c, 3 to 4 ft. 35c, 5 to 6 ft. 50c.

**Royal**—Large, dull yellow, tinted with red.

**Moorpark**—Large, excellent; an old favorite.

**Cluster**—Large, a good bearer.

## Quinces

**Prices:** 2 to 3 ft. 25c, 3 to 4 ft. 35c, 4 to 5 ft. 50c.

**Orange**—Large, bright golden yellow.

**Champion**—Fruit very large and handsome.

## Peaches

**Prices:** 2 to 3 ft. 25c, 3 to 4 ft. 35c, 5 to 6 ft. 50c.

Strong 3-year specimen trees, 75c each.

I. Ripening here from May 20 to June 10:

**Mayflower**—Early ripening, but a late bloomer. Large, red cheek.

**Early Wheeler**—White, blush cheeks, flesh white, clingstone.

**Dwarf Japan Blood**—Large, red cheek, blood-red flesh.

**Alexander**—Good quality, freestone, flesh greenish white.

**Greensboro**—Earlier and larger than Alexander.

**Arp Beauty**—An early Elberta.

**Triumph**—Earliest yellow peach.

**Honey**—Fine flavor, very sweet.

II. Ripening June 20 to July 15:

**Mamie Ross**—Very large, carmine, flesh white, clingstone.

**Pallas**—Large, flesh white, freestone.

**Carman**—Large, white freestone with red cheeks.

**Early Bell**—Large, white with red cheeks, clingstone.

**Dixie**—Large, yellow, freestone. One of the best.

**Leona**—Best yellow freestone peach.

**J. H. Hale**—Huge, beautiful golden yellow, freestone.

**Belle of Georgia**—Very large, white freestone.

**Elberta**—Large yellow freestone, red to the pit.

**Augbert**—Yellow, freestone.

**Old Mixon Cling**—White, clingstone peach, very large.

**Hero**—White, juicy clingstone.

**Chinese Cling**—Flesh white with little red.

**John S. Shaw**—A fine freestone with ruby cheeks.

III. Ripening August and September:

**Indian Cling or Blood Cling**—Red.

**Mathews Beauty**—Large, yellow freestone.

## IV. Ripening September and later:

**Salway**—Yellow freestone.**Henrietta**—Yellow clingstone.**Indian Cling**—Flesh white with red streaks.

---

**Plums****Prices:** 2 to 3 ft. 25c, 3 to 4 ft. 35c,  
5 to 6 ft. 50c.

Strong 3-year specimen trees, 75c each.

In order of ripening.

**Bruce**—June 5. Large red.**McCartney**—Golden-yellow color, enormous bearer.**Shiro**—Large, yellow, transparent.**Gonzales**—Good grower and very prolific.**Happiness**—Large, glowing red.**Nona**—Red cheeks, meat yellow.**Mikado**—Yellow meat. A good market plum.**Eikel**—Meat yellow, very juicy, red cheeks.**America**—Bright golden yellow, firm.**Sweet Botan**—Japanese.**Wickson**—Japanese. Glowing carmine.**Methley**—Very hardy.**Santa Rosa**—Very large, purplish crimson.**Burbank**—Japanese, red.**Satsuma**—Blood red flesh.

---

**Cherries****Prices:** 3 to 4 ft. 35c, 4 to 5 ft. 50c.**Compass Cherry**—In size larger than the largest cherry.**Early Richmond Cherry**—Large, red, good bearer.

---

**Prunes****Large California Prunes**—Trees 4 to 5 feet, 50c each.

---

**Mulberries****Prices:** 5 to 6 ft. 35c, 6 to 8 ft. 45c**Hick's Everbearing** — **English** — **Travis****Japan Persimmons**

(Diospyros Kaki)

Price of **Japanese Persimmons on native Persimmon Roots**, 1-year old 35c, 2-year old 50c, 3-year old 75c.**Hachiya**—Very large, reddish yellow.**Hyakume**—Large oblong, skin light yellow.**Triumph**—Medium size, tomato-shaped, dark red.**Tane-Nashi**—Very large, round, light yellow.**Yemon**—Tomato-shaped, bright orange-yellow.

---

**Nectarines****Prices:** 3 to 4 ft. 35c, 4 to 5 ft. 50c.**Honey**—Sweet and a good bearer. Ripens in July.**Old Glory**—Red, freestone.

---

**Pomegranates****Prices:** 1-year old 30c, 2-year old 40c**Old Favorite**—Large, crimson flowers, largest fruit.**Pomegranate**—Red.**Dwarf Evergreen Pomegranate**—(P. granatum nana) 12 to 18 inches, 50c.

---

**Grape Fruit**

One-year old trees, \$1.00 each.

**Duncan Variety** — **Marsh Seedless Walters**

---

**Oranges**

Strong 2-year old trees, \$1.00 each

**Satsuma** — **Ruby Orange** — **Parson Brown**  
**Washington Navel** or **Bahia**

---

**Lemons**

1 year 75c, 2 year \$1.00

**The "New Wonder" Lemon**—Everbearing variety.**Ponderosa Lemon**

---

**Kumquats****Meiwa and Nagami Varieties**—Medium size, each 75c; large size, each \$1.00.

## GRAPES AND BERRY PLANTS

### ✓ *Grapes --- Standard List*

Prices 20c each, \$2.00 per dozen.

**Muench**—Very vigorous, purplish black.  
**Lomante**—Prolific, dark purple or black.  
**Ellen Scott**—Large clusters, translucent, violet.

**Edna**—Finest white grape.

**Brilliant Grape**—Dark red, translucent.

**R. W. Munson**—A strong grower, berries black.

**Mustang Grape**—1 year from seeds 15c each, \$1.50 per dozen.

**Jacques**—(Black Spanish. LeNoir. Blue French); berry small, black.

**Herbemont**—Purple.

**Thompson Seedless Grapes** — 2-year, strong, 25c each, \$2.50 per dozen.

### ✓ *Dewberries and Blackberries*

**Austin's Thornless Dewberry**—35c per dozen.

**Corey Thornless Blackberry** — 2-year, 20c each, \$2.00 per dozen.

**Mayes' Dewberry**—35c per dozen, \$2.50 per 100.

**McDonald Berry**—35c per dozen, \$2.50 per 100.

**Dallas** — (Blackberry.) 35c per dozen, \$2.50 per 100.

**Haupt Berry**—35c per dozen.

### ✓ *Strawberries*

Prices: 15c per dozen, \$1.00 per 100.

**Klondyke** — **Lady Thompson** — **Texas**

### ✓ *Figs*

Prices: 1-year light 25c each, \$2.75 per dozen. Strong trees 35c each.

**Green Ischia**—Green.

**Magnolia**—Large, yellowish brown.

**Brown Turkey**—Medium brown, very sweet.

**Celestial**—Very sweet, prolific, hardy.

**Brunswick**—Large, purple.

**Lemon**—Large, yellowish green.

## STANDARD PECAN TREES

Prices: 2 to 3 ft. 75c, 3 to 4 ft. \$1.00,

5 to 6 ft. \$1.25, 7 to 8 ft. \$2.00

**Burkett** — **Delmas** — **Stuart**

**Success Pecan**—Large size, thin shell.

**Money Maker** — Bears early, medium size.

**Moore** — Medium sized pecans, good cracking quality.

**Lone Star**—Fine, large nuts, well-filled.

**"Daisy"**—A large, papershell nut, a regular bearer.

**Schley**—Medium to large size, thin shell.

**Mahan Pecan**—Giant size nuts of thin

shell, fine quality and attractive, 33 to the pound. \$5.00 each.

### ✓ *Almonds*

**Medina and Sultana**—Can furnish nice stock, 3 to 4 ft. 35c, 4 to 5 ft. 50c each.

### ✓ *Walnuts*

Prices: 3 to 4 ft. 75c. 5 to 6 ft. \$1.00.

**Wilson Walnut**—Large, soft shell. Best Walnut for Texas.

**Juglans Cordiformis**

**Juglans Sieboldiana**

# ROSES

## NEW CREATIONS IN ROSES

Strong, sturdy plants, 50c each

**Papa Locke**—The finest and most fragrant sparkling pink rose known. Long thornless stems with large glossy foliage, with a beautiful, long bud which opens into a beautiful double flower. This rose was originated by H. C. Locke by cross-pollination of the Jonkheer J. L. Mock with the Premier Supreme roses. Named in memory of Otto Locke, often called the Burbank of the South. Died in March 1934.

**Vice-President Garner**—A very free and continuous blooming rose and one of the finest yellow roses we have ever seen. This rose was originated by H. C. Locke by crossing the Joanna Hill and Claudius de Pernet roses. Named in honor of Vice-President John Nance Garner, 'Texas' foremost citizen.

**Irene**—A new rose of light salmon pink, shading to a pale yellow and bronze center. Its parents are Mme Butterfly and Joanna Hill. This rose was originated by H. C. Locke and named for Mrs. Irene Clausnitzer Shope, a dear friend and a great lover of roses.

**St. Theresa**—The buds of this rose are well shaped and long. Crimson of color and exceptionally fragrant. Always in bloom. This rose was originated by H. C. Locke by crossing the Etoile de France and the E. G. Hill roses. Named by Father Edwards in honor of St. Theresa—The Shrine of the Little Flower Church of

San Antonio, Texas. Over \$600.00 has already been received in royalties from the sale of this new creation.

**Julien Potin** — Fine pointed buds of deep yellow, very resistant to disease.

**Dainty Bess**—Large petals, single, beautiful pink. Free bloomer.

## STANDARD LIST

Strong field grown, 1-year old, 25c each, \$3.00 per dozen.

2-year old, extra strong, 35c each, \$4.00 per dozen.

3-year old, extra strong, 50c each, \$5.00 per dozen.

## CRIMSON AND RED

**President Herbert Hoover** — Red and rose, yellow and gold, in varying hues.

**E. G. Hill**—A big new red rose of dazzling shade.

**Hollywood**—Dark rosy cerise deepening to pure red.

**Betty Uprichard** — Copper red buds, brilliant orange carmine, light salmon.

**Francis Scott Key**—Extra large light crimson buds and blooms, a glorious rose.

**Chas. K. Douglass**—Fine long, pointed buds opening to large, loosely formed flowers of striking crimson scarlet.

**Etoile de Holland**—Brilliant crimson red blooms with enormous petals.

**Margaret McGredy**—Lovely orange vermilion color.

**McGredy's Scarlet** — Brilliant velvety scarlet, orange base.



Red Radiance in bloom — 2 year size

**Padre** — A copper scarlet rose, very beautiful.

**Olympia** — Large, well formed, vivid scarlet, undertone yellow.

**American Beauty**—Brilliant red, long-stemmed.

**Baby Rambler** (Mme. Levasseur.)

**Crusader** — Crimson. A big, strong-growing variety.

**Etoile de France.** (Hybrid Tea) — Clear red crimson velvet.

**F. J. Grootendorst**—Double red flowers in clusters.

**Helen Gould**—Long buds, double rosy-crimson.

**Mrs. Chas. Russell**—Large, well formed, very double, rosy carmine with rosy scarlet center.

**Sensation**—Long, pointed bud, brilliant red.

### PINK

**Ellen Poulsen** — Very popular, small flowered type of rose pink.

**Mrs. Lovell Swisher**—Large, beautiful, pointed buds and gorgeous flowers of a lovely salmon pink and gold color passing to flesh pink at the edge.

**Dunlop**—Deep brilliant rose pink with sparse foliage.

**Butterfly**—Fine light pink buds and exquisitely shaped flowers, tinted with gold near base of petals.

**Ilchester**—A nice profuse pink rose.

**Editor McFarland**—Well formed, brilliant pink, vigorous.

**Wm. F. Dreer**—Silvery pink with buff yellow tone at base.

**Pink Polly Polly** — Dainty pink with

gold suffusion, large, double, high centered blooms.

**Cecil Brunner**—Small dainty buds of clear pink, yellow base.

**Columbia**—Glowing pink, deepening as it opens.

**Frank W. Dunlop**—A fine cut flower variety.

**Jonkheer J. L. Mock**—Long stiff stems, large, deep imperial pink, the outside of the petal silvery rose white.

**Killarney Brilliant**—More double than Killarney, and a stronger grower. Glowing rosy carmine.

**La France**—Peach blossom to amber rose, tinted with crimson.

**Los Angeles** — Luminous flame pink, toned with coral, shaded with translucent gold at the base of the petals.

**Maman Cochet**—Very bright rose, yellow center. A very vigorous grower.

**Mme. Caroline Testout** — Hybrid Tea, lovely pink.

**My Maryland**—Glowing, intense pink.

**Paul Neyron**—Dark lilac rose, very double and notably fragrant.

**Radiance**—Intense rose pink, fragrant, large blooms.

**Rose Hill**—Pure rose-pink on both sides of the petals.

**Willowmere** — Rich shrimp pink, yellow center, toning to cream pink towards base of petals. Bushy habit.

### YELLOW

**Joanna Hill**—Rich creamy yellow, apricot center.

**Talisman**—Deep gold and scarlet buds open to large full flowers of supreme beauty.



Intensive cultivation as shown above is responsible for the wonderful growth of the famous Locke Roses

**Edith Nell Perkins** — Perfectly tinted, the outside of the petals is a bright orange cerise, the inside overspread with pale salmon pink flushed orange gold.

**Roslyn**—Slightly fragrant, golden yellow blooms, excellent yellow.

**Caledonia** — High centered blooms of creamy texture.

**Mrs. E. P. Thom**—Beautiful rose, well shaped flowers of bright canary yellow.

**Luxembourge**—Rich orange yellow with coppery shadows and creamy yellow tint.

**Autumn**—A well shaped rose, beautiful rich autumn colors, burnt orange and yellow, splashed red.

**Mervin J. Von Rossen**—Buds yellow, veins orange brown, full double fragrant flowers open lighter.

**Baby Doll or Tip Top** — A miniature rose, golden yellow tipped with clear, bright cerise.

**Eldorado**—Golden yellow, base of petals light red.

**Lady Hillingdon** — Slender, graceful buds, deep yellow.

**Mme. Butterfly** — Bright pink, apricot and gold.

**Rev. F. Page Roberts**—Orange-yellow, fragrant.

**Sunburst**—A valuable summer variety, big.

### WHITE

**Frau Karl Druschki**—White American Beauty.

**Kaiserin Augusta Victoria**—Pure ivory white.

**White Killarney**—A favorite for cutting.

**White Ophelia**—Very fragrant and very double.

### CLIMBERS

**American Pillar** — Large single pink flowers with yellow stamens. Very free-blooming.

**Climbing American Beauty** — A good bloomer.

**Climbing Etoile de France** — Brilliant red to cerise.

**Climbing Columbia**—Imperial pink, dark veined.

**Climbing Kaiserin Augusta Victoria** — Free bloomer.

**Crimson Rambler** — Rich clusters of crimson.

**Doctor Van Fleet** — Flesh white, good for cutting.

**Emily Gray** — Light orange-yellow to pale orange.

**Los Angeles** — Long-stemmed flowers, flame pink.

**Marechal Niel**—Beautiful, deep yellow.

**Paul's Scarlet Rambler**—Scarlet, shaded crimson.

**Tausendschoen**—Soft pink, in clusters.

**Yellow Banksia** — Small flowers, very fragrant.

### TREE ROSES

Single Color, \$3.00 each

**Souvenir de Claudius Pernet**  
**Golden Emblem** — **Mabel Morse**  
**Red Radiance** — **Etoile de Holland**  
**Sensation** — **Sunburst** — **Padre**  
**Radiance** — **Angelo Pernet**



Acre of the famous Locke Roses growing in our rose fields

# HARDY EVERGREENS AND SHRUBS

## Hedge Plants

**Amoor River Privet** (South) — Hardy, leaves small, round, very dense. 2 to 3 ft. 10c; balled 50c.

**California Privet**—2 to 3 ft. 10c.

**Golden Japanese Privet** (L. Japonicum aureum)—Large, yellow-margined leaves. 2 to 3 ft. 50c.

**Regel Privet** (Weeping) — Similar to Amoor River, but weeping in habit. 15c each, balled, 50c.

**Lodense Privet** (Nanum Compactum) — Dwarf, dense grower; compact. 15 to 18 inch, 2-year 10c.

**Abelia Grandiflora**—Broad-leaved evergreen, bearing clusters of tubular white flowers. Price, 1-year, 50c; 2-year 75c; 3-year \$1.00. Balled, fine specimens, \$1.50

**Buxus Arborea** (English Tree Box) — Small, for hedges 25c, \$2.50 per doz. Strong, 2-year old, balled \$1.00.

**Cape Jasmine**—Large, white, fragrant flowers, rich glossy foliage. Price, 50c and \$1.00, balled.

**Primrose Jasmine** — Yellow-flowering shrub or vine. Balled, 2 ft. \$1.00.

**Yellow Jasmine**—Clusters of bright yellow flowers. 2-year, 18 to 24 inches, 50c, balled 75c and \$1.00.

**Cherry Laurel**—Well known native evergreen. Balled, 12 to 18 inch 75c, larger \$1.50.

**Cotoneaster** (Pannosa)—White flowers, followed by scarlet berries, leaf underside ashy-gray. Graceful medium size. Balled 12 to 16 inch 75c, 18 to 24 inch \$1.00, 2 to 3 ft. \$1.50.

**Cotoneaster** (Horizontalis) — Densely spreading, horizontal branches. Shiny oval leaves; scarlet fruits. 12 to 15 inch, balled \$1.00; 18 to 24 inches \$1.50.

**Simon's Elæagnus** (Grafted) (E. pungens simonii) — Small dark green leaves, dotted with silver scales on upper surface, silvery underneath. Younger foliage

and stems brownish. 12 to 18 inches \$1.00, 18 to 24 inch \$1.50.

**Dwarf Thorny Elæagnus** (E. pungens nana — Grafted) — Spreading, medium height, usually spiny. Leaves dotted with brown scales, 12 to 18 inch \$1.00, 18 to 24 inch, \$1.50.

**Euonymus Japonica**—Bright, dark green evergreen, beautiful for hedge or single specimen. 2-year, strong 50c, large 75c.

**Euonymus** (Globe Shaped) — Small leaves, compact globe. Both green and silver variegated. 12 to 18 inch 75c, 18 to 24 inch \$1.00.

**Euonymus Variegated**—Foliage striped with yellow.

**Euonymus, Golden** — Foliage has wide gold margins. These two varieties, small 75c each, large \$1.00 each.

**Feijoa** — Silvery green leaves, waxy white and purple flowers, fragrant, delicious fruit. Hardy. Balled, 1 year 75c, 2 year \$1.00.

**Hypericum** (Gold Flower) — Low spreading habit; hardy. 1 year 75c, 2 year \$1.00.

**Lavender** (English)—Downy gray foliage, blue flowers, very aromatic. 12 to 18 inch 75c, 18 to 24 inch \$1.00.

**Lavender** (Cotton) Santolina — Dwarf evergreen perennial, silver foliage, aromatic. 12 to 18 inch 75c, 18 to 24 inch \$1.00.

**Loquat** (Japanese Evergreen Plum) — Medium height trees, long, glossy leaves, spikes of white flowers in winter, clusters of refreshing yellow fruit in March. 2 year 75c, 3 year \$1.00.

**Ligustrum Japonicum** (Bush) — Thick, dark glossy leaves. Small creamy white blossoms in spring, bluish black berries. 12 to 18 inch 10c, 18 to 24 inch 15c, large balled 50c and \$1.00 each.

**Ligustrum** (Variegated) — Foliage silvery white and green shading to pink. Balled, 2 to 3 feet, \$1.00.

**Ligustrum Lucidum** (Waxy Leaf Privet) — Extra dense compact growth, very dark waxy green leaves. Balled 50c to \$2.50.

**Magnolia Grandiflora** — Large, shining green foliage, large, fragrant white flowers in summer. A very ornamental tree. 2 ft. 75c, 3 to 4 ft. \$1.25.

**Myrtle, Roman or Sweet** (*Myrtus Communis*) — Green leaves, sweet scented shrub, white blossoms with purple stripes. Balled, \$1.00 each.

**Myrtle, Rosemary** (*Myrtus microphylla*) — Fine leaves, aromatic, orange blossom-like white flowers. \$1.00

**Nandina Domestica**—Japanese Nandina. Glossy green leaves tinged with red in young growth, bronze in winter. Flowers in panicles, white followed by red berries held through the winter. Price, 50c to \$2.00.

**Photinia**—Large, deeply serrated leaves, glossy green with reddish hue when small. Upright habit. 1 year 75c, 2 year \$1.00.

**Pittosporum Tobira**—Round and compact, trims well. 1 year 75c, 2 year \$1.00.

**Pittosporum, Silver or Whitespot** — Wide spreading, dense round headed type, light green foliage, tipped with white. 1 year 75c, 2 year \$1.00.

**Pyracantha Yunnanensis**—Light green leaves, spreading, upright growth, covered with red berries in winter. Balled, \$1.00 and \$1.50 each.

**Pyracantha Lalandi** (Firethorn) — Thorny evergreen with clusters of orange yellow berries at fall and winter. Balled, \$1.00 and \$1.50 each.

**Senisa, Silver Leaf** (*Leucophyllum Texanum*)—Evergreen ashen colored foliage. Pale lilac flowers in summer. Balled, 50c, 75c, and \$1.00.

**Viburnum Laurustinus** (*V. tinus*) — Winter flowering shrub bearing clusters of small flesh-colored blooms. 50c and \$1.00 each.

**Viburnum Sandankwa** (*V. suspensum*) — Leaves large, shiny, dark green, bushy, spreading, white flowers in clusters, tinged with pink. Balled, \$1.00 each.

**Yaupon Holly** (*I. vomitaria*)—Oval ob-

long leaves, producing a mass of scarlet berries in winter. Balled, \$1.00.

**Chinese Fir** (*Cunninghamia*)—18 to 24 inch \$1.50, 24 to 36 inch \$3.00.

## Arbor Vitae

**Beverly Golden** (*Biota*) (*T. or beverleyensis*) — Tall, slender, bright green, overcast with yellow. 2 to 3 ft. \$1.00, 3 to 4 ft. \$1.25, 4 to 5 ft. \$1.50.

**Blue-Green Arbor Vitae (Texas Blue)**—15 to 18 inch 50c, 3 to 4 ft. \$2.00.

**Blue-Green, Tall (Texas Blue)** — Tall and slender, 2 to 3 ft. 75c, 3 to 4 ft. \$1.50.

**Bonita** — Originated in our nursery. Dwarf and as round as a ball, never gets over three feet high, 12 inch 75c, 18 inch \$1.00, 2 ft. \$1.25.

**Chinese Arbor Vitae**—Dark green, vigorous, hardy, 2 to 3 ft. 50c, 3 to 4 ft. 75c, 4 to 5 ft. \$1.00.

**Daily Dwarf** (*Biota*) (*Mayhew Golden*) (*T. or Daily nana*)—Upright habit, tips a golden color in spring. 18 to 24 inch \$1.00, 2 to 2½ ft. \$1.50.

**Compacta Arbor Vitae** — Dark green, globular. 75c and \$1.00.

**Pyramidal Arbor Vitae**—Bright green, perfect slender pyramid. 15 to 18 inch 75c, 18 to 24 inch \$1.00.

**Golden Arbor Vitae**—Green with a golden tint. Very compact growth. 15 to 18 inch 75c, 2 ft. \$1.25.

**Golden Pyramidalis Arbor Vitae**—Tall and slender Golden. 15 to 18 inch 75c, 2 ft. \$1.00.

**Hudgins** (*Biota*) — Compact, bluish-green. 18 to 24 inch \$1.00, 2 to 2½ ft. \$1.50.

**True Berkman's** (*Biota Aurea Nana*) — Dwarf, compact Golden. 15 to 18 inch 75c, 18 to 24 inch \$1.00.

**Resedale Arbor Vitae**—Sugar-loaf form, bluish foliage. 1 ft. 75c, 2 ft. \$1.00.

**Standard Arbor Vitae** — Tree forming fine round head. Price: 5 feet stem to crown, \$1.50.



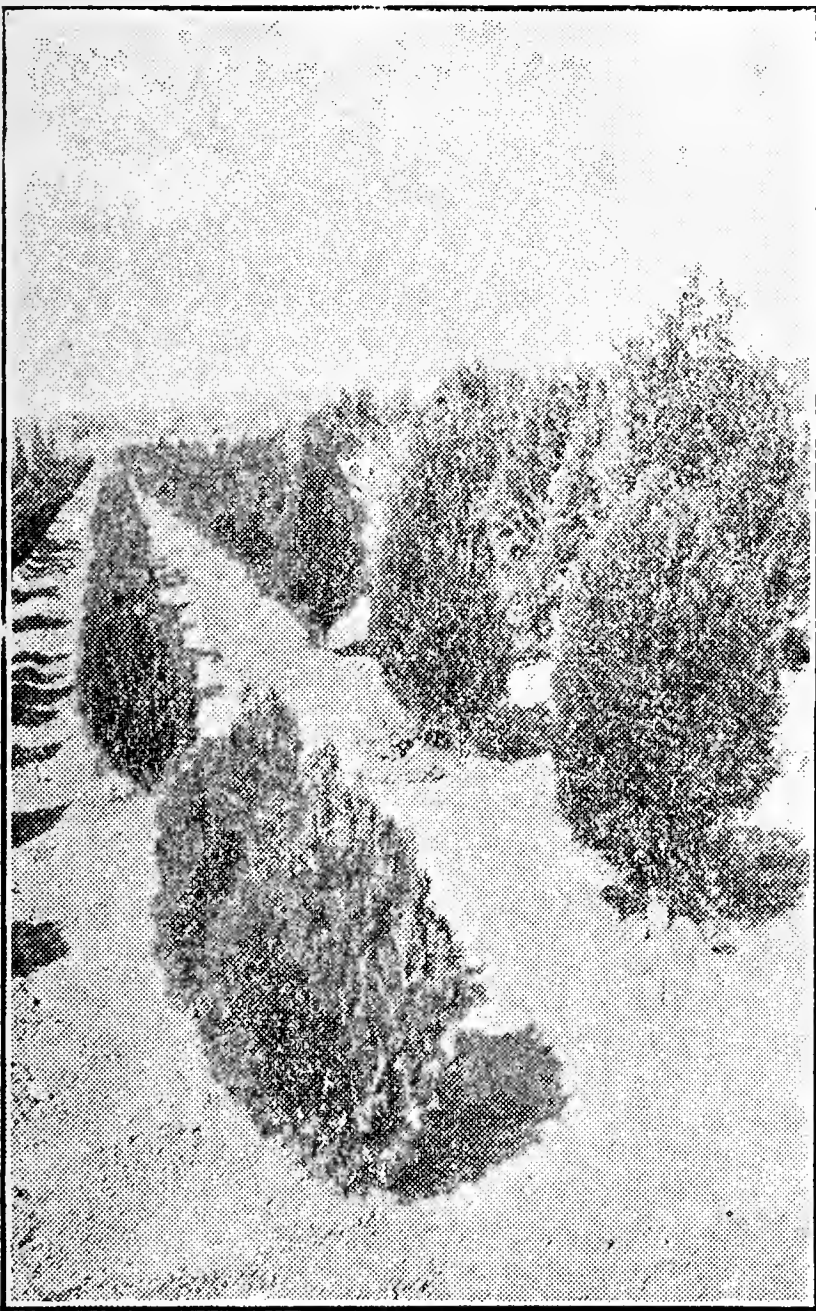
**Tall Hybrid Arbor Vitæ**—Hybrid of Arbor Vitæ and Cupressus. Loose, light green foliage. 50c and \$1.00.

---

## Cypress

**Cypress, Spreading Italian**—Horizontal Cypress. Height from 1 to 5 ft. Price scale, 75c per foot.

**Bhutan Cypress** (*C. torulosa majestica*) — Broad pyramid, yellowish-green foliage. 2 to 3 ft. \$1.50.



Rows of Arbor Vitæ in our Nursery

**Cypress, Arizona**—Silvery blue, pyramidal shape. \$1.00.

**Cypress, Royal Italian** (*C. sempervirens fastigiata*) — Tall, slender, dark green, 2 to 10 ft., 75c per foot.

---

## Junipers

**Chinensis, Mascula** — Horizontal, blue-green foliage. 2 ft. \$1.50.

**Silvestris**—Horizontal, light green. 2 ft. \$2.00.

**Pfitzer Juniper**—Grayish color foliage, flat spreading growth. \$1.00 to \$1.50.

**Prostrate Canada Juniper**—Silvery blue, heavy foliage. \$1.00 to \$1.50.

**Savin Juniper** (*Sabina*) — Bluish or gray-green. \$1.00.

**Spiny Greek Juniper**—Decidedly conical, grayish-green foliage. 9 to 12 inch 75c. 15 to 18 inch \$1.00.

---

## Cedars

**Deodar Cedar** (*Cedrus Deodara*)—Light silvery green, tapering tree. 2 ft. \$1.50, 3 ft. \$2.00.

**Mountain Cedar**—Specimens, balled, 2 to 3 ft, 75c.

---

## Pines

**Pinus Pinea**—12 to 18 inch \$1.00, 18 to 24 inch \$1.50.

## DECIDUOUS FLOWERING SHRUBS

- Altheas**—Grafted, 1 year 35c, 2 year 50c.  
**Boule de Feu** — Double red.  
**Duchess de Braband** — White, red inside; very double.  
**Lady Stanley** — Large double pink.  
**Tota Alba** — Single, pure pearly white.
- Aster**—**Grandiflora Texanum**. Improved native aster, bluish flowers in fall. 35c, extra heavy 50c.
- Barberry, Japanese, Thunbergia**—Light green leaves, red in fall, red berries in winter. Each, 25c.  
**Barberry, New Red-Leaved** — Bronze-red foliage. 50c.
- Buddleia Lindleyana (Summer Lilac)**—Spikes of violet mauve flowers in July and until frost. 35c and 50c.
- Callicarpa Americana**—French Mulberry. 35c and 50c.
- Crepe Myrtles**—Pink, Crimson, Purple, and White. 1 year 35c, 2 year 50c.
- Coral Berry**—Brilliant red berries in fall. 2 years 25c.
- Cydonia Japonica**—Japan Quince. 50c.
- Deutzias**—**Pride of Rochester**. Double, white tinted with blush. 50c.
- Elder, American and Golden Elder** — 35c each.
- Eupatorium**—White, fragrant flowers in fall, 50c.
- Flowering Almond**—Double pink, spring. 35c and 50c.
- Flowering Crab (Bechtel's)** — Pink fragrant. 35c and 50c.
- Flowering Peach**—Very attractive. 50c
- Flowering Willow (Chilopsis Linearis)**—Purple or white flowers in clusters. 35c and 50c.
- Forsythia Viridissima** — Golden Bell, early spring. 35c.
- Hydrangea (H. Hortensis)**—50c.
- Lonicera**—Bush Honeysuckle. Two varieties, white and red. 1 year, 35c, 2 year 50c.
- Mallow Marvels**—Large-flowered hardy hibiscus. White, pink, crimson, and scarlet. 35c and 50c.
- Oleanders (Nerium)** — Red, pink, or white. 50c and \$1.00.
- Philadelphus Grandiflora** — Syringa or Mock Orange. 35c and 50c each.
- Pussy Willows**—35c and 50c.
- Prunus pissardi**—Purple-leaf Plum. 3 to 4 ft. 50c.
- Rosemary**—2-year old 50c, large, balled, 75c.
- Salvia Greggii** — Hardy, everblooming, red-flowering shrub. 35c and 50c.
- Spirea Van Houttei**—White Spirea. 35c and 50c.
- Anthony Waterer**—Rosy red spirea. 35c and 50c.
- Spirea Thunbergii** — Snow Garland. Dwarf early white Spirea. 35c and 50c.
- Syringa — Lilacs** — Purple Lilac and Rothomagensis, the Red Persian Lilac, 35c each, \$3.50 per dozen.
- White or Red Lilac**—Double, grafted, 50c.
- Lavender or Chaste Tree (Vitex Agnus Castus)** — Colors: Lilac or White. 35c and 50c.
- Weigelia**—Wonderful spring-flowering shrub. Eva Rathke and Rosea. 2 year old plants, 50c.

## SHADE AND ORNAMENTAL TREES

**Ailanthus** (Tree of Heaven)—Tall, rapid growth. 3 to 5 ft. 35c, 6 to 8 ft. 50c.

**American Ash**—A quick grower. 6 to 8 ft. 50c.

**American Elm**—Long-limbed. 6 ft. 50c, 8 to 10 ft. \$1.00.

**Arizona Ash**—Adapted to arid regions. 5 to 6 ft. 75c.

**Catalpa**—Very decorative. 4 to 6 ft. 50c, 7 to 10 ft. 75c.

**Chinese Elm**—Quickest growing Elm. 6 ft. 75c, 7 to 8 ft. \$1.00.

**Japan Varnish Tree** (*Sterculia Platanæfolia*)—Very hardy and drouth resistant. 4 to 6 ft. 50c, 6 to 8 ft. 75c.

**Judas Tree or Red Bud**—First tree to bloom in the spring. Red flowers. 4 to 6 ft. 50c, 8 to 10 ft. 75c.

**Ligustrum Japonicum** — Well-trimmed trees. 3 to 4 ft. 50c, 5 to 6 ft. 75c, 6 to 8 ft. extra heavy, \$1.00.

**Silver Maple**—75c and \$1.00.

**Locust, Robinia Pseudoacacia** — Black Locust, 5 to 6 ft. 50c.

**Locust, Gleditsia Triacanthos** — Honey Locust, 5 to 6 ft. 75c.

**Populus Alba**—Silver-leafed Poplar, 5 to 6 ft. 35c, 6 to 8 ft. 50c.

**Carolina Poplar**—5 to 6 ft. 35c, 6 to 8 ft. 50c.

**Lombardy Poplar**—6 to 7 ft. 50c, 8 to 10 ft. 75c.

**Retama**—Fernlike foliage, yellow flowers, 75c.

**Sycamore**—5 to 6 ft. 50c, 6 to 8 ft. 75c.

**Umbrella China**—4 to 5 ft. 35c.

**Weeping Mulberry**—6 to 7 ft. \$1.00.

**Weeping Willow**—An old favorite. 50c and 75c.

**Tamarix—Salt Cedars.** — 4 to 5 ft. 40c.

**Taririfloracans**—Large, dark green foliage.

**Canaris Jap. Plumosa**—Upright, feathery light green.

**Estivalis**—Pink blooms, grayish foliage.

**Indica**—Dark green foliage, light pink flowers.

**Odesseana**—Grayish foliage, rose colored flowers.

**Tamarix Africana** — Feathery foliage, small pink flowers on long stems. Does well in sandy soil.

---

## CLIMBING, CLINGING, CREEPING PLANTS AND VINES

**Antigonon Leptopus**—Queen's Wreath. 15c and 25c.

**Bignonia Grandiflora** — Giant flowering Trumpet Vine. 2 year grafted, 75c.

**Bignonia Radicans** — Trumpet Vine, 2 year, 35c.

**Clematis Drummondii** — 25c.

**Clematis Paniculata**—Fragrant. 25c.

**Euonymus Radicans** — Evergreen vine, 25c.

**Ficus Repens** — Climbing Fig. 35c and 50c.

**Honeysuckle, Climbing**—Coccinea, red, and Halleana, white and yellow. 35c.

**Ivy, American** — The true Virginia Creeper. 25c.

**Ivy, Boston** (*Ampelopsis Veitchii*) —

Small foliage, blood-red in fall. Rapid grower. Each, 35c.

**Ivy, Hardy English**—Hardy Evergreen. 25c.

**Kudzu**—Chinese Kudzu, fastest grower of all. 25c.

**Matrimony Vine**—Small white flowers. 35c.

**Moon Flower, Giant White** — Large satiny white. 35c.

**Passion Flower** (*Passiflora*)—Blue flowers. 25c.

**Vinea, Evergreen** (Trailing) — Dark green. 15c.

**Vinea Harrisemii** (Trailing)—Green and gold. 15c.

**Wistaria Sinensis**—Purple or White. 35c each.

## ORNAMENTAL GRASSES

**Bamboo**—Clumps, each, 50c.

**Eulalia Japonica Variegata**—25c.

**Eulalia Japonica Zebrina**—Zebra Grass. 25c and 50c.

**Eulalia Univittata** — Silvery white plumes, 25c and 50c.

**Georgia Cane**—Tall growing cane. 25c and 50c.

**Gynerium Argenteum**—Pampas Grass. Silver-white plumes. 50c.

**Pennisetum Grass** — Dwarf, plumed grass. 25c and 50c.

### Agaves

**Agave Americana**—Century Plant. 50c and \$1.00.

**Agave, Variegated**—Green leaves with yellow margin. Each, 50c; larger, each \$1.

### Yucca

**Red Yucca** (Hesperaloe Parviflora) — Brilliant coral red flowers. Blooming size plants 75c and \$1.00.

**Spanish Bayonet** (Yucca Treculeana)— 2 to 3 ft. \$1.00.

**Stiles Yucca**—Dwarf variety, very ornamental. 75c.

**Yucca Filamentosa**—Evergreen. 2 year old, 25c.

### Hardy Out-Door Palms

**Canary Date Palm** (Phoenix canariensis)—Stately date palm, hardy. 2 to 3 ft. \$1.00.

**Fruiting Date Palm** (Phoenix Dactylifera) — 2 ft. \$1.50.

**Sabal Palmetto** — Cabbage Palmetto. Very hardy. 1 to 1½ ft. \$1.00, 2 to 3 ft. \$2.

**Washingtonia** (Pritchardia Filifera) — Large plants, weight 50 to 100 pounds. 2 ft., each \$1.00, 3 ft. \$2.00, 4 ft. \$3.00.

**Pindo** (Cocos australis)—\$1.00 and \$1.50.

### Desert Cacti

The sorts here named make a nice selection of good variety. Price, each, 50c, 75c, \$1.00 and \$1.50, according to size. Collection of six nice plants for \$3.00.

*Coryphantha sulcata.*

*Coryphantha neo-mexicana.*

*Neobesseya similis.*

*Neomammillaria applanata* (Devil's pin-cushion).

*Echinocereus blanckii* (Finger Cactus).

*Echinocereus triglochidiatus.*

*Echinocereus reichenbachii* (Lace cactus).

*Echinocereus enneacanthus* (Strawberry cactus).

*Echinocereus engelmannii* (Arizona).

*Homatocephala texensis* (Goat Horn).

*Hamatocactus setispinus* (Fish Hook).

*Lophophora Williamsii* (Peyote).

*Carnegia gigantea* (Arizona) (Giant Cereus).

*Ferrocactus wislizeni* (Arizona) (Candy Cactus).

*Opuntia macrorhiza.*

*Opuntia lindheimerii.*

*Opuntia imbricata* (Walking Stick).

*Opuntia lingeriformis* (Cow's tongue).

*Opuntia leptocantis.*

## FLOWERING AND ORNAMENTAL PLANTS

**Acalypha**—Sanderi, Chenille Plant; and Tricolor, the Fire Dragon. 25c and 50c.

**Ageratum, Blue**—Of great value for edging or massed planting. 10c each, \$1.00 per dozen.

**Alternanthera**—Dwarf edging and carpet bedding. Two varieties: Aurea—Fine-leaved, yellow and green; and Brilliantissima—broad-leaved, bright red, mottled bronze and cream. Prices: 5c each, 50c dozen; larger, 10c each, \$1.00 dozen.

**Artillery Plant** (Pilea Arborea)—15c.

**Asters, Fine Branching**—Plants ready in March. 10c each, \$1.00 dozen.

**Asparagus** — Lace-like foliage much used for cut flower background. A beautiful indoor trailing plant.

Plumosus nanus—Emerald sprays. 25c and 50c.

Sprengeri—Long, dense fronds. 25c and 50c.

Garden Variety—Fine, dark green. 25c.

**Azaleas**—Very profuse bloomer. 12 in. \$1.00; 15 in. \$1.50.

**Bachelor's Button**—Cornflower. 10c dozen, \$1.00 a 100.

**Balsams, Double** — 10c each, \$1.00 per dozen.

**Banana, Orinoco** — Large, dark green leaves. \$1.00.

**Begonias**—Foliage and flowers very ornamental. 25c and 50c.

Alba Pietra Rosea—Leaves green, spotted with white, flowers delicate rose.

Argentea Guttata—Purple bronze leaves with silvery marking; white flowers.

Beefsteak—Leaves silver on top, red underneath.

Corallina Lucerna — Immense flower clusters, bright coral red, changing to pink.

Gracilis Luminosa — White, red, and pink. Very fine for bedding.

Marguerite—Bronze green leaves. Light rose flowers.

Metallica—Triangular, metallic bronze leaves, veined darker, hairy underneath and on stems. White flowers.

New Beefsteak Ruffle-Leaved — Heavy fringe. 50c.

Rubra—Rich green leaves, coral red blooms.

Thurstoni—Leaves bronzy green, shaded with crimson and olive, underside purplish red. Flowers rosy white.

**Bougainvillea**—Brasiliensis and Crimson Lake. \$1.00.

**Calendula**—Double, dark orange. 25c per dozen.

**Candytuft**—10c per dozen.

**Carnations**—Mixed color seedlings, 50c dozen. Large named varieties, 10c each, \$1.00 dozen.

**Chrysanthemums** — Large flowered types, yellow, red, pink, and white. 10c each, \$1.00 per dozen.

**Cockscomb**—Dwarf, large-flowering. 15c per dozen.

**Coleus**—Bedding. 10c each, \$1.00 per doz.

**Coleus**—Trailing Queen. 5c each, 50c per dozen.

**Daisy**—Early Elder and Shasta. 5c each, 50c per dozen.

**Devil's Ivy**—Wonder Vine. 25c and 50c.

**Dusty Miller**—Silver King. 50c.

**Dianthus**—Hardy Garden Pink. 15c per dozen.

**Dracena Indivisa**—50c.

**Euphorbia Heterophylla**—Mexican Fire Plant. 10c.

**Boston Fern**—25c, 35c and 50c.

**Maiden Hair Fern**—25c.

**Native River Fern**—Clumps, 25c.

**Ostrich Plume Fern**—25c, 35c, and 50c.

**Sword Fern**—25c, 35c, and 50c.

**Feverfew**—Double white. 10c.

**Ficus Elastica**—India Rubber Tree. 75c and \$1.00.

**Impatiens Sultana Hybrids**—Red, pink, white. 15c, 25c.

**Geraniums**—Special Bedding Collection \$1.00 dozen, larger, per dozen \$2.50.

Beaute Poitevine—Light pink, 10c and 25c.

Buchner—Dwarf, large flowering, white. 10c and 25c.

Ivy-Leaved—25c.

S. A. Nutt—Crimson red. 10 and 25c.

**Golden Glow**—Strong bunches 25c, \$2.50 per dozen.

**Hollyhocks**—White, red, pink, yellow, or mixed. 10c each, \$1.00 dozen.

**Hibiscus**—A splendid hardy shrub. 50c and 75c.

Hibiscus Coccinea—Single red. 75c.

Subviolacea — Enormous, semi-double, carmine.

Peachblow—Double, rich clear pink.

Brilliantissima—Single, scarlet, flushed with orange.

**Jasmine, Confederate**—Fragrant white flowers. 75c.

**Jasmine, Grand Duke**—Double. \$1.00.

**Kochia**—Summer Cypress or Burning Bush. 15c dozen.

**Lantanas** — Sun- and drouth-resistant, 35c each.

Cook—Dwarf; opens orange and yellow, turns rose.

Alba Perfecta—Pure white.

Sunset—Deep orange red, turns to vivid crimson.

Pink Beauty—Silvery rose with soft yellow center.

Weeping Lantana—Delicate rose lilac flowers.

**Annual Larkspur** — Mixed seedlings, stock-flowered varieties, white, pink, lilac, blue, Venetian blue. 30c dozen.

**Perennial Larkspur** — Leading colors. 25c each.

**Liatris Spectabilis**—Purple Snake Root, 25c each.

**Mignonette**—50c per dozen.

**Military Plant**—Large-leaved Artillery Plant. 15c.

**Mint, English**—15c.

**Pandanus Veitchi**—Curved foliage, light green, striped with white. \$1.00.

**Pansies**—Choicest large-flowering. Assorted. 20c dozen, 50 for 75c, 100 for \$1.25.

**Pot Palms**—Attractive house plants. 75c and \$1.00.

Sago (*Cycas Revoluta*) — *Kentia Balmoreana* — *Latania Borbonica* (*Latania commersoni*) — *Phoenix Roebelenii*.

**Parrot's Feather** — Aquatic hanging plant. 15c.

**Peppers, Ornamental**—35c.

**Petunias** — White, pink, red, purple, variegated, and mixed. 10c each, \$1.00 per dozen.

**Phlox**—Drummondi Grandiflora, 10c per dozen.

**Phlox, Hardy Perennial** — Red, pink, white, violet. 25c.

**Plumbagos**—Sky blue or white. 35c.

**Plumosa**—Feathered Cockscomb. 10c.

**Poinsettia Pulcherrima** — Christmas Plant. 35c.

**Poinciana Gillesii**—Bird of Paradise. 50c.

**Primrose**—Primula. Mixed Colors. 50c

**Salvia, Azurea Grandiflora**—Blue Sage. 25c.

**Salvia Greggii**—Beautiful shade of red. 25c .

**Salvia Splendens**—Bright scarlet. 10c.

**Scabiosa**—Mourning Bride or Pin Cushion. 25c per dozen.

**Snake Plant** — (*Sansevieria Zeylanica*) 50c.

**Snapdragon** (*Antirrhinum*) — 5c each, 50c per dozen.

**Stocks** (*Levkojen*) — Ten Weeks, 25c per dozen.

**Sweet Wiliam**—Double, All colors, 25c per dozen.

**Texas Bluebonnet** (*Lupinus Texensis*)— 25c per dozen.

**Tritoma**—Red Hot Poker. 35c.

**Umbrella Plant** — *Cyperus Alternifolius*. 25c.

**Verbena**—Mammoth Flowered. Purple, scarlet, pink, and white. 10c each.

**Vinea**—Variegated. Green leaves, bordered with white. 25c.

**Vinea Rosea** — Madagascar Periwinkle. Rose, pure white, white with rose eye, and mixed. Ready in April. 15c per dozen.

**Violets** — Governor Herrick, Prince of Wales. 50c dozen.

**Wallflowers**—25c each.

**Wandering Jew** — Green, Red, Variegated. 10c, 3 for 25c.

**Zinnias**—Colossal Flowered. All colors. 25c per dozen.

# FLOWERING BULBS AND ROOTS

**Cannas**—Dry, divided roots of the following varieties, 45c per dozen.

Alemania—Giant. Scarlet, yellow bordered.

Austria—5 to 6 inches across. Golden yellow.

Brightness—Fiery cinnabar red.

City of Portland—Bright rosy pink.

David Harum—Bronze foliage, yellow orange flower.

Eureka — White.

Feuermeer—Dark red, medium height.

Fire Bird (Oiseau de Feu) — Scarlet.

Florence Vaughan—Pale yellow, spotted crimson.

Giant Banana Leaf—Huge leaf, small scarlet flowers.

Humbert—Yellow and red blooms.

King Humbert — Orange scarlet, red-streaked.

La France—Rosy pink.

Mrs. Alfred Conard—Salmon pink.

Orange Bedder — Bright orange and scarlet.

Red Plume—Crimson on long stems.

Rosea Gigantica—Rose pink.

Saladin—American Beauty Red.

The President—Bright red.

Wintzer's Colossal—Vivid scarlet.

Yellow Plume—Lemon yellow.

**Caladium Esculentum**—Elephant's Ear. 25c and 50c.

**Fancy-Leaved Caladiums**—Assorted, 35c each.

**Dahlias**—Showy, wonderful cut flowers.

Bashful Giant—Apricot and gold. 50c.

Dr. Tevis—Salmon-rose, suffused with old gold. 40c.

Eventide—Flesh, shading to white. 35c.

Frank Walker—Lavender-pink. 35c.

George Walters—Cactus. Salmon-pink. 50c.

Gloriana—Old gold, reddish center. 40c.

Glory of New Haven—Pinkish mauve. 75c.

Jane Selby—Mauve-pink. 40c.

Judge Marean — Glowing salmon-pink. 75c.

Kalif—Scarlet, hybrid Cactus. 50c.

La Paloma—Chrome orange, yellow center, flaked white. 50c.

Maude Adams — White, overlaid with pink.

Mrs. Ethel F. T. Smith—Creamy white to yellow. 40c.

Mrs. I. de Ver Warner—Mauve-pink. 75c.

Mrs. Carl Salbach—Solferino-pink. 50c.

Pride of California—Dark, rich crimson. 40c.

Rosa Nell—Deep bright rose. 75c.

Souv. de Gustav Doazon—Orange red. 35c.

William H. Slocombe—Large, pale yellow. 40c.

**Gladiolus**—35c per dozen. \$2.50 per 100.

Alice Tiplady — Rich orange, lighter shadings.

America—A fine pink variety.

Anna Eberius — Reddish purple, with cardinal shade.

Velvet King—The best scarlet Gladiolus.

Chicago White—Pure white.

E. J. Shaylor—Ruffled rose pink.

Francis King—Vermilion scarlet.

Halley—Salmon pink.

Maiden's Blush—Blush pink with lighter throat.

Pendleton—Rose on white ground, red blotch.

Rose 1910—Early, rose pink.

Scarlano—Ruffled bright red.

**Hyacinths**—Assorted colors. 15c each; \$1.50 dozen.

**Water Hyacinths**—Floating pond plant. 15c each; \$1.50 dozen.

**German Iris**—Ivory white and blue. 15c each, \$1.50 dozen.

**Amaryllis Johnsonii**—Red, white stripe, 35c and 50c.

**Crinum Lily**—Southern Lily. Pink, red stripe. 25c.

**Easter Lily**—Pure white. 20c each, 12 for \$2.25.

**Godfrey Calla**—Potted. 35c each.

**Hippeastrum Punicum**—Pot Amaryllis. 35c each, 3 for \$1.00.

**Regale Lily**—Flowering bulbs 50c.

**White Spider Lily**—Pure white. 20c.

**Yellow Day Lily**—Rich gold, striped. 10c each.

**Water Lilies**—The lily for ponds and basins.

Pink Opal—Deep pink. A new variety. \$1.50.

Rose Arey—Clear cerise-pink. \$2.00.  
 Rose Magnolia—Pink. Strong, vigorous. \$1.25.  
 Hopatcong—Pure white, 5 to 7 inches across. 75c.  
 Marliacea Alba — White, light yellow stamens. \$1.25.  
 Marliacea Chromatella—Bright yellow. \$1.00.  
 Odorata—White. 75c.

Narcissus — Assorted. 75c per dozen; \$5.00 per 100.

Crocus—White, yellow, blue, striped. 5c, 50c dozen.

Yellow Daffodils—15c. \$1.50 dozen.

Peonies—Double, various colors. 35c.

Mexican Tuberoses — Single white. 5c, 25c dozen.

Darwin Tulips — Assorted. 35c dozen.

## FLOWER SEEDS

All Locke's Tested Flower Seed  
 10c per package

Ageratum — Sweet Alyssum — Amaranthus (Joseph's Coat) — Antirrhinum (Snap Dragon) — Antigonon (Queen's Wreath) — Aster (Best Mixed) — Bachelor Button (Corn Flower) — Balsams (Double) — Balsams (Improved Rose, extra double) — Calendula — California Poppy — Candytuft — Canna Seed — Canterbury Bells — Cardinal Climber — Carnation — Castor Bean — Cockscomb (Dwarf) — Cockscomb (Feathered) — Columbine — Coreopsis Lanceolata — Corn Flower (Centaurea Imperialis) — Cosmos Klondyke — Cosmos (Giant Flowered) — Cypress Vine — Dahlia — Daisy (Double) — Delphinium (Double, white, pink, and mixed) — Dianthus (Sweet William) — Dianthus Chinensis (Chinese Pinks) — Forget-Me-Not — Four-o'-Clocks — Gaillardia — Globe Amaranth — Gourds (Ornamental) — Gypsophila (Elegans Grandiflora Alba, Large Flowering White) — Hollyhock — Hyacinth Bean —

Heavenly Blue Morning Glory — Joseph's Coat — Kochia (Burning Bush) — Lantana — Lobelia — Larkspur (Double Stock Flowered) — Marigold (French dwarf) — Mignonette (Sweet and Mallet) — Moon Flower — Morning Glory (Mixed) — Nasturtium — Oxalis — Pansy (Giant Flowering) — Petunia — Phlox Drummondii — Pinks (Dianthus) — Poppy (Large Double Red) — Poppy (Shirley) — Poppy (Single Red) — Portulaca (Moss Rose) — Salvia Splendens — Scabiosa (Mourning Bride) — Snapdragon (Crimson, Fiery Red, Pink, Yellow Mixed) — Stocks (Ten Weeks) — Sunflower (Double Chrysanthemum Flowered) — Sweet Peas (Grandiflora and Spencer) — Sweet William — Texas Blue Bonnet — Verbena — Vinca Rosea (Mixed, pure white, white with pink centers, and pink) — Zinnias (Dwarf) — Mammoth Zinnias (Mixed, and white, golden yellow, sulphur yellow, flesh, crimson, scarlet, and purple) — Zinnias (Dahlia Flowered) — Liliput Double 12-inch Zinnias.



## VEGETABLE SEEDS

All Locke's Tested Vegetable Seed  
5c per package

**Bush Beans** — Kidney Wax — Stringless Green Pod — Bush Lima.

**Pole Beans** — Kentucky Wonder — Pole Lima.

**Beets, Red** — Crosby's Egyptian — Early Blood.

**Cabbage** — Early Jersey Wakefield — Early Flat Dutch.

**Swiss Chard** — Sea Kale or Spinach Beet.

**Carrots** — Danvers Half Long — Chantenay.

**Cauliflower** — Early Snowball.

**Corn, Sweet** — Country Gentleman — Golden Bantam.

**Cucumbers** — Early White Spine — Locke's New Ideal — Early Short Green.

**Kohlrabi** — Early Vienna.

**Lettuce** — Big Boston — Prizehead.

**Melons** — Alabama Sweet — Tom Watson — Rocky Ford Canteloupe.

**Mustard** — Southern Giant Curled.

**Okra or Gumbo** — White Velvet — Dwarf Green Prolific.

**Onion Seed** — Crystal White Wax — White Bermuda.

**Garden Peas** — Alaska — American Wonder.

**Peppers** — Large Bell or Bull Nose — Red Chili.

**Pumpkins** — Large Yellow — Green Striped Cushaw.

**Radishes** — Early Scarlet Globe — Early Scarlet Turnip White Tipped — Early Long Scarlet, Short Top.

**Spinach** — Bloomsdale Savoy.

**Squash** — Early White Bush Scallop — Yellow Summer Crook Neck.

**Tomato** — Comal — Locke's New Triumph Pink — Locke's Giant — President Harding.

**Turnips** — Early Purple Top, Strap Leaved — Purple Top White Globe — Ruta Baga or Swede.

## FIELD SEEDS

**Grasses** — Bermuda, 50c lb. — Sudan, 15c lb.

**Sorghum** — Red Top Cane, 15c lb., 2 lbs. 25c, postpaid.

**Sunflower** — Mammoth, 50c lb.

**Seed Potatoes** — Irish Cobbler, 10c lb.

**Seed Corn** — Surecropper, White. Peck 75c.  $\frac{1}{2}$  bushel \$1.50, bushel \$1.75.

**Yellow Dent** — Ferguson's. Peck 75c,  $\frac{1}{2}$  bushel \$1.50, bushel \$2.75.

**Pop Corn** — Per packet 10c, lb. 25c.

## INSECTICIDES AND FERTILIZERS

**Volck** — Spray for garden and nursery. Pint 75c, quart \$1.25, gallon \$3.00.

**Slug Shot** — An Insecticide for garden use. 5 lb. packet 75c, 1 lb. packet 25c, postpaid 30c.

**Vitamite** — Nitrogenous Bacterial Culture. Small cartons 75c, large cartons \$1.25.

**Vigoro** — Well known plant food. 10 lbs. 75c, 25 lbs. \$1.75, 50 lbs. \$3.00, 100 lbs. \$5.00, F. O. B. New Braunfels, Texas.

## **CUT FLOWERS**

**During the summer months we can furnish  
Roses and Tube Roses.**

**During June and July we can furnish Asters.**

**Write us for our prices on cut flowers; we can  
furnish the finest in the best assortment.**

**Write us for wholesale prices; we specialize in  
Tube Roses, Caladium Esculentum, Amaryllis  
Johnsonii and Canna Bulbs, Roses, Crepe Myrtle,  
Peach and Plum Trees.**

**We are the largest shippers of  
Texas Blue Bonnet Seed in the world.**

**Locke Nursery & Floral Company**

**New Braunfels, Texas**





From .....

.....

.....



**Locke Nursery & Floral Company**

**P. O. Box 101**

**New Braunfels, Texas**

